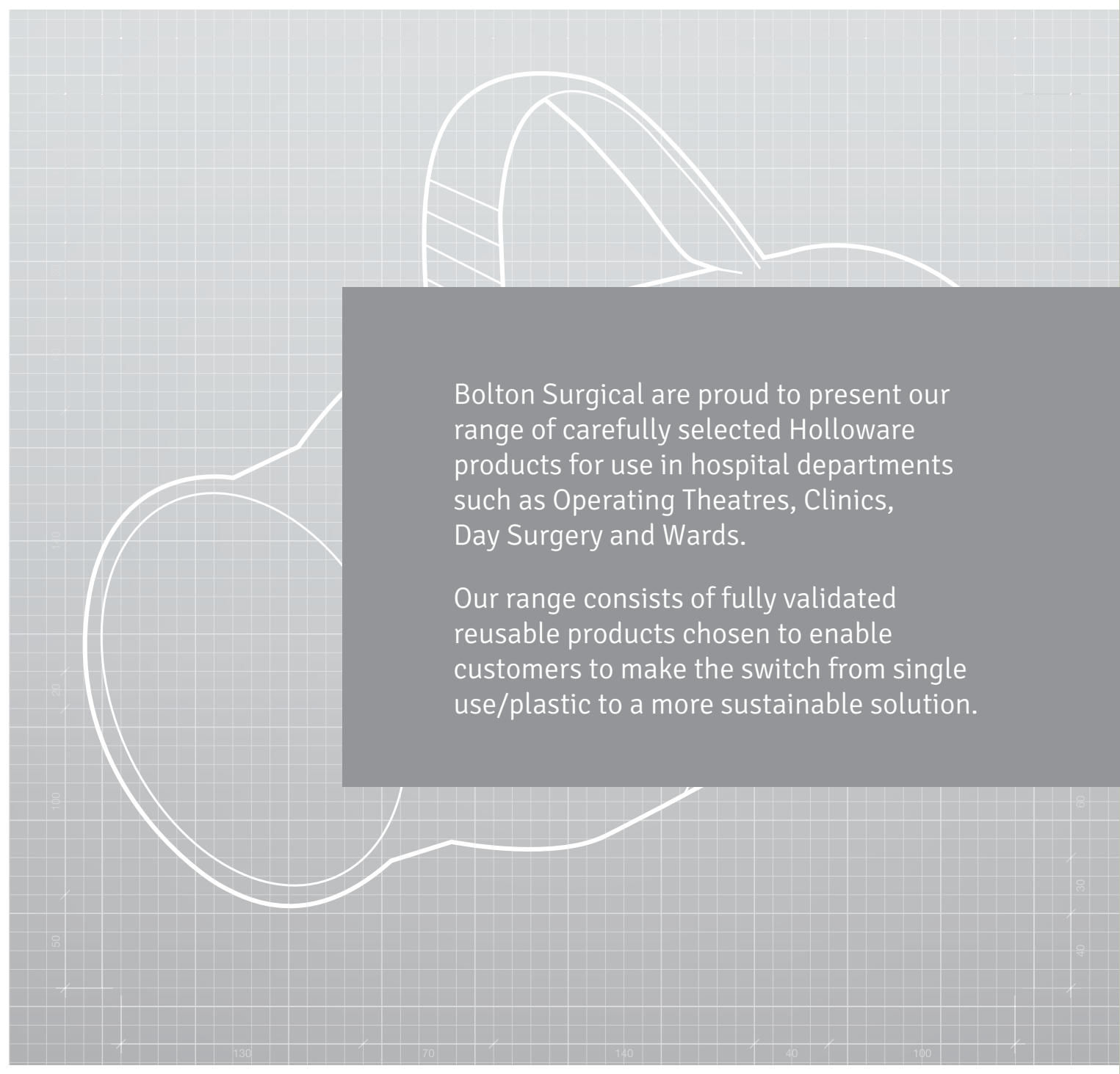




Holloware

Pride.Precision.Performance.



Bolton Surgical are proud to present our range of carefully selected Holloware products for use in hospital departments such as Operating Theatres, Clinics, Day Surgery and Wards.

Our range consists of fully validated reusable products chosen to enable customers to make the switch from single use/plastic to a more sustainable solution.

- Made from Type 304 (18-8) non-magnetic bright polished and fully passivated Stainless Steel to ensure excellent corrosion resistance against all commonly encountered substances. Fully recycleable.
- Precision cut, formed and finished to ensure smooth edges and surfaces for greater cleaning efficacy.
- Will retain its original form indefinitely with careful handling and if used and processed in line with the issued product IFU.
- Fully re-usable and capable of withstanding unlimited cleaning and reprocessing cycles in accordance with HTM 01-01 with cleaning solutions up to 10.5ph, Thermal disinfection at 95°C for a minimum of 1 minute and steam sterilisation at 134°C to 137°C for a minimum of 3 minutes.
- Available in a large range of sizes selected to suit all requirements.
- Guaranteed for 15 years, see certificate of guarantee for further details.

The important stuff...

Quotations, Ordering, Stock Availability and Samples

Our Sales team are happy to receive requests for Quotations, Orders, Stock Availability and Samples via email or telephone.

This product range is available to view on our website. Customers can browse, build a wish list/quotation request and send directly to our sales department.

Can't find what you're looking for?

We are here to help! Email us, call us or request a visit from your Sales Consultant who will be happy to provide expert guidance on product options and discuss your requirements.

Specifications

Images within this catalogue are not full size, for key product and feature sizes please refer to the dimensions given in the product descriptions. We reserve the right to change/remove a product or specification at any time. Measurements given in descriptions within this catalogue reflect nominal dimensions and are subject to manufacturing tolerances.

Instructions for Use

IFU's are included with every product supplied, current IFU's for all our product ranges are accessible by visiting our website boltons.co.uk.

Guarantees

All current certificates of guarantee applicable to this range are available by visiting our website boltons.co.uk.

Regulatory

Bolton Surgical's manufacturing, supply and distribution operations are compliant with a Quality Management System for Medical Devices certified to BS EN ISO 13485.

Sustainability

We are committed to reducing our carbon footprint and increasing sustainability in all our business operations. Part of that commitment is to support our customers to make more sustainable procurement choices too. The Bolton Range of Holloware is a Sustainable product choice. All components of this range are reusable and fully recyclable at the end of their service life. To gain maximum service life from these products customers should follow the relevant IFU's. To find out more about our Sustainability Charter, please visit our website boltons.co.uk.



T: +44 (0)114 240 4400
E: sales@boltons.co.uk

Bed Pan



Image shown 26-8000-03

AVAILABLE IN ADULT AND CHILD SIZES

SIZE/DESC	DIMENSIONS	PACK	
Adult	(L) 355mm x (W) 290mm x (H) 50mm	1	26-8000-00
Child (Paediatric)	(L) 305mm x (W) 235mm x (H) 50mm	1	26-8000-03
Adult Bed Pan Cover	(L) 300mm x (W) 165mm	1	26-8000-02

Bed Pan with Handles



SIZE/DESC	DIMENSIONS	PACK	
Adult	(L) 355mm x (W) 360mm x (H) 50mm	1	26-8000-01
Adult Bed Pan Cover	(L) 300mm x (W) 165mm	1	26-8000-02

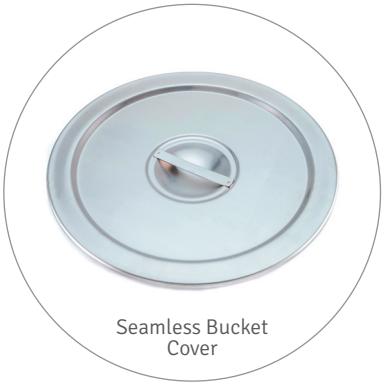
Bell Shaped Pitcher



AVAILABLE IN 3 SIZES			
SIZE/DESC	DIMENSIONS	PACK	
0.9 Litre	150mm (Dia) x 170mm (H)	2	26-8011-00PK2
1.8 Litre	160mm (Dia) x 205mm (H)	2	26-8011-01PK2
2.7 Litre	195mm (Dia) x 226mm (H)	2	26-8011-02PK2

Image shown 26-8011-01PK2

Bucket - Seamless



Seamless Bucket Cover

SIZE/DESC	DIMENSIONS	PACK	
12 Litre	308mm (Dia) x 266mm (H)	1	26-8012-00
Seamless Bucket Cover	320mm (Dia)	1	26-8012-01

Dressing Tray



DIMENSIONS	PACK	
(L)253mm x (W) 157mm x (H) 20mm	6	26-8004-00PK6

Gallipot



Image shown 26-8010-04PK6

AVAILABLE IN 8 SIZES			
SIZE/DESC	DIMENSIONS	PACK	
2oz	65mm (Dia) x 35mm (H)	6	26-8010-00PK6
3oz	70mm (Dia) x 36mm (H)	6	26-8010-01PK6
4oz	77mm (Dia) x 45mm (H)	6	26-8010-02PK6
6oz	83mm (Dia) x 50mm (H)	6	26-8010-03PK6
8oz	90mm (Dia) x 50mm (H)	6	26-8010-04PK6
10oz	95mm (Dia) x 55mm (H)	6	26-8010-05PK6
12oz	103mm (Dia) x 60mm (H)	6	26-8010-06PK6
14oz	112mm (Dia) x 58mm (H)	6	26-8010-07PK6

Graduated Measuring Jug



Image shown 26-8013-05PK2

AVAILABLE IN 8 SIZES			
SIZE/DESC	DIMENSIONS	PACK	
100cc (Scale 25ml)	51mm (Dia) 59mm (H)	6	26-8013-00PK6
200cc (Scale 40ml)	67mm (Dia) 66mm (H)	6	26-8013-01PK6
300cc (Scale 50ml)	75mm (Dia) x 80mm (H)	6	26-8013-02PK6
500cc (Scale 100ml)	81mm (Dia) x 110mm (H)	6	26-8013-03PK6
1000cc (Scale 100ml)	106mm (Dia) x 126mm (H)	6	26-8013-04PK6
2000cc (Scale 200ml)	136mm (Dia) x 154mm (H)	2	26-8013-05PK2
3000cc (Scale 500ml)	156mm (Dia) x 180mm (H)	2	26-8013-06PK2
5000 cc (Scale 500ml)	181mm (Dia) x 214mm (H)	2	26-8013-07PK2

Iodine Cup



Image shown 26-8007-00PK6

AVAILABLE IN 3 SIZES			
SIZE/DESC	DIMENSIONS	PACK	
2oz	60mm (Dia) x 30mm (H)	6	26-8007-00PK6
6oz	83mm (Dia) x 55mm (H)	6	26-8007-01PK6
14oz	120mm (Dia) x 60mm (H)	6	26-8007-02PK6

Kidney Tray - Non-Lipped



Image shown 26-8016-05PK6

AVAILABLE IN 9 SIZES			
SIZE/DESC	DIMENSIONS	PACK	
20cm	207mm (L) x 116mm (W) x 33mm (H)	6	26-8016-00PK6
21cm	218mm (L) x 119mm (W) x 33mm (H)	6	26-8016-01PK6
22cm	230mm (L) x 130mm (W) x 40mm (H)	6	26-8016-02PK6
24cm	252mm (L) x 150mm (W) x 42mm (H)	6	26-8016-03PK6
27cm	280mm (L) x 170mm (W) x 45mm (H)	6	26-8016-04PK6
30cm	315mm (L) x 185mm (W) x 55mm (H)	6	26-8016-05PK6
33cm	335mm (L) x 190mm (W) x 60mm (H)	6	26-8016-06PK6
36cm	380mm (L) x 215mm (W) x 60mm (H)	6	26-8016-07PK6
40cm	415mm (L) x 250mm (W) x 65mm (H)	6	26-8016-08PK6

Kidney Tray - Lipped

PACK
OF 6

SUPPORTING
SUSTAINABILITY



AVAILABLE IN 4 SIZES			
SIZE/DESC	DIMENSIONS	PACK	
6" Lipped	172mm (L) x 96mm (W) x 34mm (H)	6	26-8015-00PK6
8" Lipped	208mm (L) x 98mm (W) x 36mm (H)	6	26-8015-01PK6
10" Lipped	256mm (L) x 119mm (W) x 45mm (H)	6	26-8015-02PK6
12" Lipped	310mm (L) x 152mm (W) x 55mm (H)	6	26-8015-03PK6

Image shown 26-8015-00PK6

Lotion Bowl

PACK
OF 6

SUPPORTING
SUSTAINABILITY



AVAILABLE IN 6 SIZES			
SIZE/DESC	DIMENSIONS	PACK	
5"	145mm (Dia) x 55mm (H)	6	26-8005-00PK6
6"	174mm (Dia) x 66mm (H)	6	26-8005-01PK6
8"	225mm (Dia) x 89mm (H)	6	26-8005-02PK6
10"	275mm (Dia) x 111mm (H)	6	26-8005-03PK6
12"	328mm (Dia) x 132mm (H)	6	26-8005-04PK6
17"	435mm (Dia) x 161mm (H)	6	26-8005-05PK6

Image shown 26-8005-01PK6

Medicine Cup

PACK
OF 6

SUPPORTING
SUSTAINABILITY



Image shown 26-8008-01PK6

AVAILABLE IN 2 SIZES			
SIZE/DESC	DIMENSIONS	PACK	
1oz	48mm (Dia) x 30mm (H)	6	26-8008-00PK6
2oz	52mm (Dia) x 50mm (H)	6	26-8008-01PK6

Spitting Jug

PACK
OF 6

SUPPORTING
SUSTAINABILITY



SIZE/DESC	DIMENSIONS	PACK	
4"	100mm Dia x 65mm Height	6	26-8002-00PK6

Sponge Bowl

PACK
OF 6

SUPPORTING
SUSTAINABILITY



Image shown 26-8009-00PK6

AVAILABLE IN 5 SIZES			
SIZE/DESC	DIMENSIONS	PACK	
10cm 3/8 QT	108mm (Dia) x 50mm (H)	6	26-8009-00PK6
12cm 5/8 QT	133mm (Dia) x 56mm (H)	6	26-8009-01PK6
14cm 7/8 QT	145mm (Dia) x 60mm (H)	6	26-8009-02PK6
16cm 1 3/8 QT	167mm (Dia) x 70mm (H)	6	26-8009-03PK6
18cm 1 7/8 QT	185mm (Dia) x 80mm (H)	6	26-8009-04PK6

Tumbler

PACK
OF 6

SUPPORTING
SUSTAINABILITY



Image shown 26-8014-00PK6

AVAILABLE IN 4 SIZES			
SIZE/DESC	DIMENSIONS	PACK	
5oz	65mm (Dia) 75mm (H)	6	26-8014-00PK6
7oz	77mm (Dia) 80mm (H)	6	26-8014-01PK6
10oz	80mm (Dia) x 98mm (H)	6	26-8014-02PK6
12oz	83mm (Dia) x 115mm (H)	6	26-8014-03PK6

Urinal - Female



DIMENSIONS	PACK	
(L) 145mm x (W) 125mm x (H) 216mm	1	26-8001-02

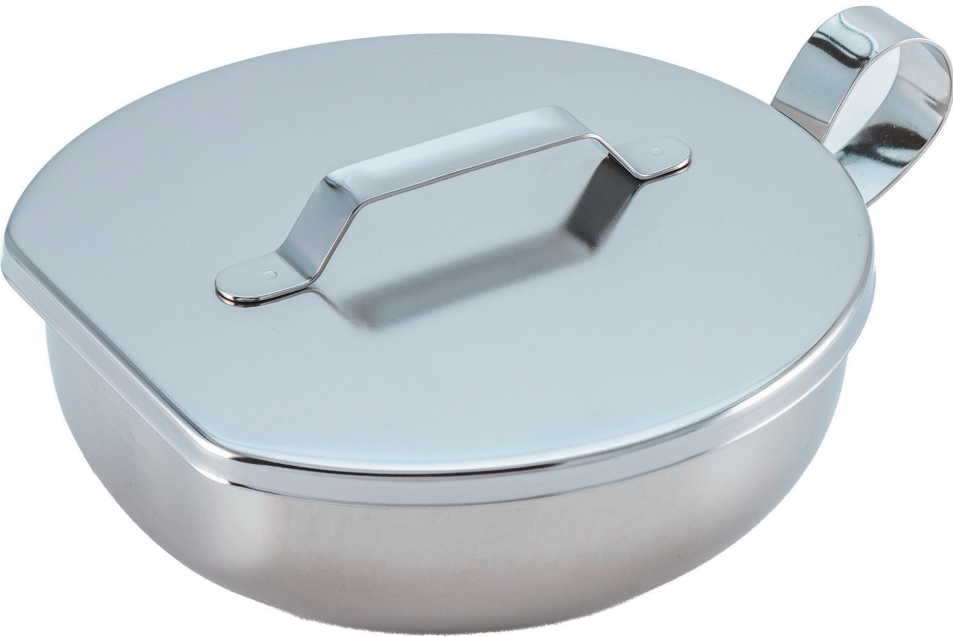
Urinal - Male Horizontal



DIMENSIONS	PACK	
110mm Dia x 230mm (L)	1	26-8001-01

Vomit Bowl with Lid

PACK
OF 6



DIMENSIONS	PACK	
157mm (Dia) x 50mm (H)	6	26-8003-00PK6

Wash Basin

PACK
OF 6



AVAILABLE IN 4 SIZES

SIZE/DESC	DIMENSIONS	PACK	
32cm (Shallow)	320mm (Dia) x 80mm (H)	6	26-8006-00PK6
32cm	320mm (Dia) x 105mm (H)	6	26-8006-01PK6
34cm	340mm (Dia) x 100mm (H)	6	26-8006-02PK6
36cm	365mm (Dia) x 115mm (H)	6	26-8006-03PK6

Image shown 26-8006-01PK6



boltons.co.uk

Bolton Surgical Limited
Churchill House, 16 Churchill Way
Chapeltown, Sheffield S35 2PY
T: +44 (0)114 240 4400
E: sales@boltons.co.uk



MD 500657